



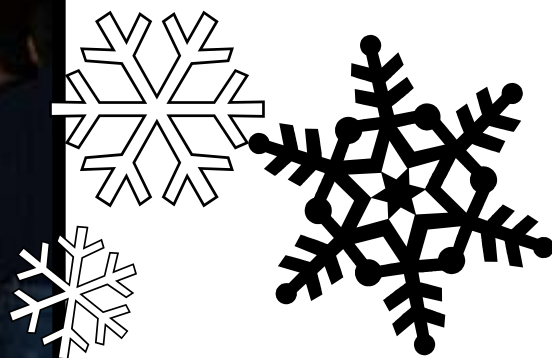
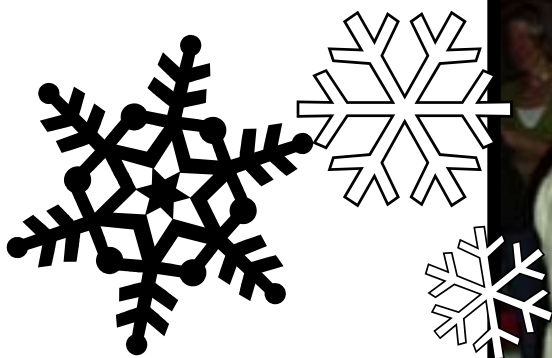
# The SOLAR Ray

A Monthly Publication of the School for Outdoor Leadership, Adventure, and Recreation (SOLAR)

January 2008

## SOLAR HOLIDAY PARTY

Photos by Marie Martinko & Dave DeFrance



## THINK SNOW - RUN WITH THE DOGS

by Karen Bates

It's that time of year again to think snow!

I am happy to announce that I will not be running a weekend dog sled trip this winter. Don't worry, the trip still goes on! Larry Mergentime will be filling in for me this year as trip leader. I will be on a two week dog sled dream trip to Moosonee, Ontario. Moosonee is located on James Bay, which is the southern edge of Hudson Bay in northern Ontario.

The SOLAR weekend dog sled trip will be February 15 - 17, 2008. The cost of the trip is \$360 Canadian, all inclusive from Friday night shared motel through Sunday lunch. Don't delay; there are only 10 spots available.

For details contact Larry Mergentime at the SOALR meetings or [larry.mergentime@charter.net](mailto:larry.mergentime@charter.net).



## 2007 ANNUAL PHOTO CONTEST

by Allen Duncan

It's that time of year! SOLAR amateur photographers can brag about their trips and show off their camera skills. Dig up your best photos from 2007 and bring them to the January 2008 meeting.

### Categories

- Scenery
- Animals
- Plants
- People
- Black and White
- Best Overall
- Photo Pro\*

\*The Photo Pro category is for photos by advanced or professional photographers, not intended for the general competition



### Official Rules

- Entries must be taken and entered by SOLAR member
- Photos must have been taken between January 1 and December 31, 2007
- Standard Photos must be no larger than 8" x 10", panoramic no larger than 8" x 18"
- Matte size must be no larger than 11" x 14" for standard photos and 11" x 21" for panoramic
- Photos taken at Non-SOLAR events or activities must be entered in Non-SOLAR categories
- Limits: One photo entry per person per category; ten photos per person total
- Prizes will be awarded to first place winner in each category and to Best Overall
- Photos will be voted on at January meeting

# GRAND CANYON, ARIZONA ~ MAY 2008

by Grey Ivanov

I will lead a non-SOLAR trip to the high desert area of Arizona. The trip will include crossing the Grand Canyon. The beginning of May is a time when every plant in a desert comes alive. Before May it is too cold and after May it is too dry for them. We are going in exactly this time to see the blooming desert.



Going across Grand Canyon means going from cold, early spring through the hot summer and back to the cold spring. It usually means you have to carry a lot of gear to keep warm. Unless you are smart. If you are smart and you do not need to carry much because all necessary gear will be waiting for you on the opposite rim of the canyon. Two cars will do this trick. One group in one car will drive to southern rim. Another group in other car will drive to northern rim. After the backpacking portion of the trip each group will use a car brought to the parking by another group. As well as extra gear, food and fuel.

All of you have a different level of training. To accommodate it one group will go in easy relaxing pace, another will take a more moderate route and pace. So far I have only people signed up for the moderate route.

The sad part of this plan is that it is expensive, including airfare, permits, car rental and gasoline.

Estimated airfare is \$450 and additional expenses (car rental, gasoline, and permits) are \$150.

The price can be dramatically reduced if some of you choose to drive to Arizona. The only way to reserve camp sites in Grand Canyon is to apply 6 months in advance. So I would appreciate your early response. In fact I will request permits as soon as I have enough people for 2 cars.

Day	Date	North Group	South Group
1	Sat, May 10	Flight to Phoenix*, rent a car, drive to Northern rim, camping	Flight to Phoenix*, rent a car, drive to Southern rim, camping
2	Sun, May 11	Going to campground under the rim	Going to campground under the rim
3	Mon, May 12	Day hike to Ribbon Faults	Day hike at Tonto Trail
4	Tue, May 13	Going to Phantom Ranch	Going to Phantom Ranch
5	Wed, May 14	Going to campground under the rim	Going to campground under the rim
6	Thu, May 15	Day hike at Tonto Trail	Day hike to Ribbon Faults
7	Fri, May 16	Going to Southern rim	Going to Northern rim
8	Sat, May 17	Reserved day (Day hike**)	Reserved day (Day hike***)
9	Sun, May 18	Driving to the airport, return flight	Driving to the airport, return flight



\*Phoenix is cheapest destination for now. It can be substituted with Flagstaff if the price will be better.

\*\*Southern rim is surrounded by high desert area

\*\*\* Northern rim is surrounded by beautiful pinewood forest, This itinerary will be discussed and finalized at the group's meeting after your sign up.

Please contact me at 734-979-3562 or by email at [sergey.ivanov@us.bosch.com](mailto:sergey.ivanov@us.bosch.com) for more information.



## SOLAR HIKE SCHEDULE

by Matt Dalton



Hike with the Solar Club! Lead a hike or post your own hike! It's all about getting out, exercising and enjoying Michigan's Great Outdoors. Everyone is welcome: members & non-members. Hikes start at 9:30 AM. Hike Coordinator: Matt Dalton: [mdalton@ameritech.net](mailto:mdalton@ameritech.net)

Post a message on the Solar Yahoo site, discuss car pooling/ride sharing, obtain a list of other hikers, and obtain additional details or directions for the hike. Make plans for an after hike restaurant stop.

January 1, 2008 Tuesday Happy New Year!

January 6, 2008, Sunday - 9:30 AM, Kensington Metro Park, Milford, MI.

I-96 and Kensington Road exit, meet at the Nature Center for a slow paced hike or X-C Ski. Optional restaurant stop after the hike. Happy Hiking for 2008!

January 12, 2008, Saturday - 9:30 AM, Highland State Recreation Area, White Lake, MI., east of Milford, enter the park from M-59 Highland Rd, meet at Haverhill Parking Lot. Volunteer hike leader requested.

January 20, 2008, Sunday- 9:30 AM, Proud Lake State Park, Milford, MI

Meet behind the Park Headquarters for a slow to moderate paced through level terrain. Hike or cross country ski. "You may be able to rent some skies from Heavner's Canoe/Kayak and Ski Headquarters." Optional restaurant stop after.

January 28, 2008, Saturday - 9:30 AM, Brighton State Recreation Area,

Meet at the Bishop Lake beach parking lot. Park is south west of Grand River Avenue and Brighton Rd., west of Hwy 23 and south of Hwy 96. Optional restaurant after, plenty of choices in downtown Brighton.

February 3, 2008 Sunday - 9:30 AM, To Be Determined

Do you have a favorite hiking area: city, county or State Park? This could be your big opportunity to lead a hike this year.

## SURVIVAL CLASS

by Douglas Lanyk

What would you do if you were on a light-backpacking trip and something went way wrong? Now you're stuck in the wilderness, off the trail, in bad weather, and injured, do you know what to do? How would you handle this situation? Do you have enough gear to survive? Will your skills see you through this challenge safely? Starting February 7 SOLAR will be putting on a winter survival class. By the end of the class you will be prepared to take on a weekend outing with minimal gear. More importantly you will know how to be prepared for unforeseen events. You will be better able to avoid or minimize any survival situation that may come your way.

Class will start immediately following the Enjoying Michigan Winters class in February.

It will run 5 consecutive weeks on Thursdays after work. We will have one Saturday or Sunday practical and a final weekend practical. The class will be \$100. Sign-ups will be at the December and January meetings.

But wait there's more. The prerequisites are: passing winter backpacking, CPR certification, and I strongly suggest wilderness first aid.

Come have fun with me. For more information, please contact, Douglas Lanyk at 248-634-4551 or by email at [dslanyk@earthlink.net](mailto:dslanyk@earthlink.net).

## poetic nature

by Elizabeth Schwab

### A Skiing Song at Dawn

*From the Snow Fields of Upper Michigan*

The winter morning broods blue and deep...  
The moon sets gold in the west.  
Make fast my skis! While the world is asleep,  
I seek dreams sweeter than rest!

As the margins of sand that hide and divide  
In drifts on Superior's shore,  
The miles of snow are as smoothed by a tide  
When ravenous storm-hounds roar!

The breath of the morning is fierce and sweet,  
Like music loved in a dream,  
The winds on my back fasten sails to my feet...  
I move like a swan down a stream!

My skis glide fast and my skis glide free...  
Shadows grow blue on the snow,  
A sailor am I on a frozen sea  
As onward and Godward I go...

Soles of my feet! Hug tight my skis,  
Here on the high hill's crest!  
Light I shall fly as a white cloud flees...  
The rushing wind thrills my breast!

The sun splashes gold and indigo,  
Through gateways of Godhood I ski,  
And here in the splendor of golden snow  
God is the soul of me!

Mariam Heideman Krarup  
From "An Anthology of Verse About Michigan's  
U.P."

If you have a favorite poem relating to the outdoors that you have read or have written yourself that you would like to see here in a future edition of the SOLAR Ray, send it to Elizabeth Schwab by email at: qes1339@yahoo.com. Include the source you obtained it from.

## KNOW YOUR KNOTS:

### A KNOT-TYING WORKSHOP FOR BACKPACKERS

by Joan Tobin Rozelle

**Date:** Tuesday, January 29, 2008

**Time:** 6:30 PM - 9:00 PM

**Location:** Bowling Centers Association  
28200 Southfield Road in Southfield  
East side between 11 & 12 mile

**Cost:** \$10.00 per person

**Class Limit:** 12 people

**Objective:** Join us for a hands on clinic designed to give you the know how on tying knots. Knot tying is an invaluable skill to have in any outdoor setting.

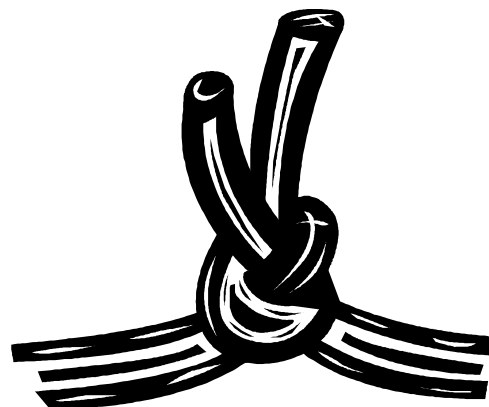
In this workshop, we will focus on knots that are useful when backpacking, and learn and practice practical applications such as bear bagging, putting up a tarp for shelter, throwing a rescue line or simply hanging a clothesline. Increase your knowledge, your safety level and your comfort zone while backpacking.

**Skills:** Learn 10-12 different knots, what they would be useful for, and little tricks to remember them the next day! Also learn tricks to quickly untie your knots and preserve your rope (so you won't have to cut it).

**Knots Covered:** Overhand knot, Slip Knot, Square Knot, Double Half-Hitch, Bowline, One-Handed Bowline, Trucker's Hitch, Taut-line Hitch, Clove Hitch, Butterfly Knot, Figure Eight Knot and more (as time permits).

**Materials Provided:** handouts and practice rope

For more information, contact Joan Tobin Rozelle at 734-341-7028 or by email at joanrozelle@yahoo.com. Sign-ups will be taken at the December and January SOLAR meetings.



## SPOTLIGHT ON PAM RIEHL SZAKAL

by Rebecca Sweeton

### HOW LONG HAVE YOU BEEN A MEMBER OF SOLAR?

Since 1998.

### HOW DID YOU GET INVOLVED WITH SOLAR?

The first weekend I moved to Michigan from Buffalo I was mountain biking at Bald Mt. Three times, I almost ran into the same person who was also biking. The last time we decided to bike together. It was Nancy Day, a SOLAR lifetime member (and I think was Ray Editor at the time). While we were biking she told me all about SOLAR. That was September 1997 and I was just starting a new job. It wasn't until the following spring I finally had time to attend a meeting.

### HOW DID YOU START BACKPACKING?

My Dad always loved the outdoors. He would take us fishing, target shooting, canoeing, and walking all over Connecticut. When I was 10 he proposed a 1-week hiking trip to the Green Mountains of Vermont with a YMCA wilderness camp (located outside Great Barrington, MA). I wore blue jeans, had leather work boots, a nylon windbreaker with cotton lining and a bright orange external frame pack and it was the best week of my life and changed me forever. That same summer I also went on a 1-week canoe trip to the Saranac Lake region of NY. I spent the next 4 summers as a camper taking hiking, rafting, kayaking, and biking trips. I was also lucky enough to work as a counselor for 3 summers in high school. It was the best job—I traveled for 8-weeks each summer (and worked for peanuts) from northern Quebec down to West Virginia. It was more than I could have ever asked for. You can say I pretty much grew up in the outdoors.

### WHAT HAS YOUR FAVORITE TRIP BEEN SO FAR?

The Haute Route in Switzerland. While visiting Mt. Baker in Washington just after college I had seen the snow capped mountains and wild flowers for the first time and remember thinking, this is what Switzerland is like. Since then I always had a desire to hike there and it did not disappoint. Around every corner was another



beautiful vista, a quaint village or remote cabin, and very friendly people. Spending my first wedding anniversary there with Lou also made it very special!

### WHAT WOULD YOUR DREAM TRIP BE?

Thru-hiking the Appalachian Trail. I plan to do it (have wanted to since I was 15 years old), just trying to get enough time off work to do so without losing my job.

### WHAT CLASSES WOULD YOU LIKE TO ADD TO SOLAR'S CURRICULUM?

Women's Backpacking was the class I wanted to see and was fortunate enough to be able to teach it this year. The first class went great and I hope it will become a staple of the curriculum line-up going forward.

### WHAT HAS BEEN YOUR MOST REWARDING EXPERIENCE IN SOLAR?

Meeting my husband, Lou Szakal. I intentionally did not want SOLAR to become a "dating service" for me. It was my outlet and I didn't want anything to take away from that. So it was a surprise to me when Lou swept me off my feet, even though I had known him for 1.5 years already. It has made my time at SOLAR even more rewarding sharing a life long passion with my partner at my side.

### HOW HAS SOLAR CHANGED DURING THE YEARS YOU HAVE BEEN A MEMBER?

What I have enjoyed about SOLAR is that it really hasn't changed. Membership rises and falls, activities come in cycles, and new classes get added or some don't draw. What I like about SOLAR is that it is cyclical every few years as fresh faces join and become active, elders guide the youngans. I was on Steering Committee for 6 years as well and I can say the same for it. It is nice to know that SOLAR is still a passionate group of people who love the outdoors and just want to share their experiences and knowledge with others without becoming corporate or a bureaucracy.

# **SOLAR FEBRUARY PROGRAM: LIVING WITH THE EASTERN MASSASAUGA RATTLESNAKE**

by Allen Duncan



Photo by Matthew Heumann

The program will include:

- How to safely co-exist with this shy, secretive snake.
- Identification, life history, status and conservation of the massasauga in Michigan.
- Opportunities to observe a live massasauga and other “look-alike” snakes.

Presented by: Yu Man Lee, Associate Program Leader, Zoology, Michigan State University Extension

---

## **SOLAR PROGRAM SCHEDULE**

by Allen Duncan

### **January: SOLAR Photo Contest**

#### **Upcoming Programs:**

- February: The Massasauga Rattler with Yu Man Lee, MSU Extension Scientist
- March: Author Jim Dufresne presents his new book: “Backpacking Michigan”
- April: SOLAR Annual Business Meeting
- May: SOLAR Officer Elections

**NOTE:** *All programs take place at Colony Hall immediately following the SOLAR business meeting.*

Do you have an idea or suggestion for a SOLAR Program? Please e-mail me: [programs@SOLAROutdoors.org](mailto:programs@SOLAROutdoors.org).

## ATTENTION ALL SOLAR MEMBERS...

By Mary Price

As of January 1st, 2008, all 2007 annual memberships will have expired. Be sure to stop by the Membership table at the General Meeting on January 2nd or fill out an application or mail completed application to Mary Price, 22801 Tulane, Farmington Hills, MI 48336 along with a check or money order made out to SOLAR (NO CASH).

Not at the meeting? Membership forms can be downloaded from the SOLAR website, [www.solaroutdoors.org](http://www.solaroutdoors.org) or form is provided in this month's Ray. Prices remain: \$40 for a single membership, \$55 for family, \$175 for single Lifetime, and \$250 for Family Lifetime. Don't miss out on the upcoming classes or trips because you haven't renewed your membership. Lifetime members do not need to complete a new form.

### COMING SOON: ANNUAL SOLAR STEERING COMMITTEE ELECTIONS

For the past 30 years, SOLAR has strived to be a successful organization, school and all around fun place to be. This is your chance to make a difference.

On May 6, 2008, SOLAR will be holding its annual Steering Committee elections. By running for one of the positions, or just by participating in the voting process, you can have a say in which direction SOLAR is heading. All currently paid members are eligible to run and vote. No experience is necessary—just a willingness to make SOLAR the best outdoor club it can be!

In addition to the monthly membership meetings, the Steering Committee holds a club business meeting the last Tuesday of each month in which all committee members are encouraged to attend. As SOLAR is a volunteer organization, all Steering Committee members give their personal time to participate in a larger way for the good of the club.

More information on how to run for a steering committee position will be posted in future editions of the SOLAR Ray, so stay tuned!



## WHAT'S MISSING?

Your article!

Your pictures!

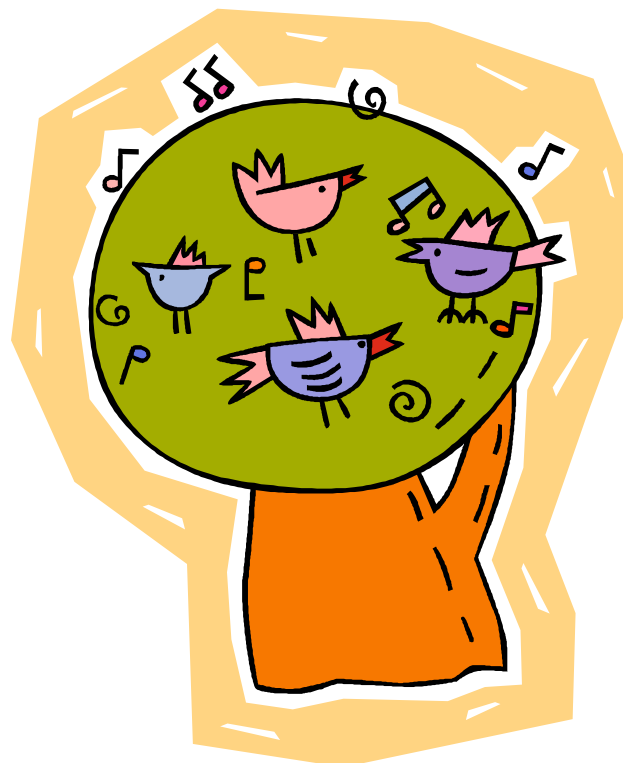
Your trip recommendation!

Email YOUR contributions to  
the SOLAR Ray at:  
[rayeditor@solaroutdoors.org](mailto:rayeditor@solaroutdoors.org)

### SAVE A TREE!

by Rebecca Sweeton

Save a tree and download the SOLAR Ray rather than receiving it by mail. To no longer receive the SOLAR Ray by mail, please email Mary Price at [membership@solaroutdoors.org](mailto:membership@solaroutdoors.org).





## THE RECUMBENT VOYAGER

by Winnie Chrzanowski



### Into the Wild

By John Krakauer

Anchor Books, 207 pages

\$13.95

On 28 April 1992, Christopher McCandless, also known as Alexander Supertramp, headed into the Alaskan interior with 10 lbs. of rice, a .22 caliber rifle, cheap leather hiking boots, and a “tattered state road map he’d scrounged at a gas station.” He was wearing a pair of rubber work boots given to him by Jim Gallien, a union electrician on his way to Anchorage. On 6 September 1992, “six people in three separate parties happened to visit the remote vehicle on the same afternoon.” The derelict International Harvester - vintage 1940 - vehicle, once part of the Fairbanks Transit System (Bus 142), contained the emaciated and badly decomposed body of 24-year-old Chris McCandless.

Into the Wild is an intriguing book about an oddly fascinating character. In the words of Chris’ father, Chris was “good at almost everything he ever tried . . . which makes him supremely overconfident.” He would listen to what his father had to say, nod politely, and then do what he wanted. He wouldn’t be dissuaded from what he had set out to do. Chris’ feet itched early on; as soon as he was able, he’d spend his school vacations wandering the U.S. His confidence remained intact throughout his adventures.

Good at almost everything he ever tried, Chris’ affable personality “made an indelible impression on a number of people during the course of his hegira, most of whom spent only a few days in his company. “ Ronald Franz was 80 when he met Chris in January 1992. Based on the brash 24 year old’s advice, Franz put his furniture in storage and “put a little camper on the back of his pickup” and started seeing “some of the great work that God has done here in the American West.”

Why should anyone care whether Chris McCandless, an intelligent, well-educated young man from a prosperous, accomplished family, chose to wander off into the Alaskan wilderness poorly prepared to survive the harsh environment? Was he a romantic who died for his ideals? Was he insane? Was he arrogant or overconfident as his father stated? No matter what answer any of us chooses, by the end of Krakauer’s book, we care about Chris.

Into the Wild is an expanded version of Krakauer’s article, “Death of an Innocent,” which appeared in the January 1993 issue of Outside magazine. Krakauer tells a good story; the book moves fast and goes in many directions—metonymic of Chris’ lifestyle. Krakauer opens the book with Chris’ entry into the Alaskan interior and the beginning of his experiences on the Stampede Trail. Interspersed throughout the book, Krakauer provides insight into Chris’ background and family. Krakauer offers up a few comparisons of Chris to other anchorites who have disappeared without trace into the wild—Alaskan and the Southwestern U.S. A few chapters are devoted to Krakauer’s adventures mountain climbing. Overall, though, the book is about Chris and what drove him to the Stampede Trail. Like any good story, this one ends up in the Alaskan interior on the Stampede Trail. No answers surface other than that Chris, despite all his attempts, made a lot of mistakes and suffered the direst of consequences: starvation.

Krakauer’s book attempts to bring understanding to Chris’ strong drive to live in the bush and constantly take chances with his life. Whether or not Krakauer sheds light on Chris’ short but dramatic life is up to the reader.

The articles, book, and movie (Into the Wild directed by Sean Penn)—everything about this mind-boggling incident has caused consternation and a lot of negative commentary from Alaskans in particular. In one of the articles I read on Chris, Dave Telerico, the mayor of Denali Borough, asks why “all these books and movies . . . don’t tell the stories of the people who survive . . . “ As Chris’ mother says, “Many people have told me . . . they admire Chris for what he was trying to do. If he’d lived, I would agree with them.”

## SOLAR APPLICATION

Name:	Home Telephone #:	
Address:	Work Telephone #:	
City:	State:	Zip Code:
Email:		
Birthday (optional):		

SOLAR has permission to publish the following information on its roster: ( ) Home # ( ) Work # ( ) Email  
 SOLAR has permission to publish on the SOLAR website my: ( ) Name ( ) Telephone # ( ) Email  
 The SOLAR RAY Monthly Newsletter is available each month at the SOLAR website [www.solaroutdoors.org](http://www.solaroutdoors.org). Would you prefer to have it mailed to you? ( ) YES ( ) NO

Payment Type: ( ) Cash ( ) Check (#) \_\_\_\_\_ Make checks payable to SOLAR  
 Type of Membership: ( ) New Member ( ) Renewal  
 ( ) Single Annual Membership: \$40.00 ( ) Family Annual Member: \$55.00  
 ( ) Single Lifetime Membership: \$175.00 ( ) Family Lifetime Membership: \$250.00

The following information is required for family memberships:

Spouse's Name: \_\_\_\_\_ Age: \_\_\_\_\_  
 Other Family Members (under the age of 18): If more than 2 additional members list on back of application.  
 Name: \_\_\_\_\_ Relationship: \_\_\_\_\_ Age: \_\_\_\_\_  
 Name: \_\_\_\_\_ Relationship: \_\_\_\_\_ Age: \_\_\_\_\_

How did you find out about SOLAR? \_\_\_\_\_

1. All memberships shall expire at the end of the current calendar year unless otherwise stated on your membership card.
2. **IMPORTANT: THIS MEMBERSHIP WILL NOT BE ACCEPTED UNLESS THE LIABILITY RELEASE IS READ AND SIGNED**

### School for Outdoor Leadership, Adventure & Recreation ABSOLUTE LIABILITY RELEASE

Many outdoor activities are inherently dangerous and can cause injury or even death. By joining SOLAR, I agree to assume all of these risks. I agree that SOLAR will not be responsible if I am harmed while I am traveling to, attending, or participating in club meetings, classes or trips, or while using club equipment. In exchange for membership, I agree to release and discharge (waive my rights to bring any personal injury suit against):

1. SOLAR;
2. Its leaders, instructors, steering committee, and all individual members;
3. Its landlord at Colony Hall; and
4. The retail stores that let SOLAR use space for classes.

Exceptions: While SOLAR will have no responsibility for any injury to a member (even if SOLAR is grossly negligent),

I understand that individual SOLAR members, including me, remain fully responsible and liable for any injury or damage caused either by their pets or by their negligent driving of a vehicle.

I have read, understood and agree to this Assumption of Risk Agreement and Liability Release this \_\_\_\_\_ day of \_\_\_\_\_, 200\_\_\_\_.

Mail application to: Mary Price, 22801 Tulane, Farmington Hills, MI 48336

Member's Signature: \_\_\_\_\_

Spouse's Signature (REQUIRED on married couple's family memberships): \_\_\_\_\_

Parent's Signature, if under 18: \_\_\_\_\_

# SOLAR 2007 CALENDAR

JANUARY ACTIVITIES					
1/8	TUE	GENERAL MEETING	Colony Hall	Lou Szakal	Everest2008@comcast.net
1/8	FRIDAY	PROGRAM: Photo Contest	Colony Hall	Allen Duncan	allenduncan@aggienetwork.com
1/18-1/20	WKND	Cross Country Ski Weekend	Lake Ann, MI	Jim Coe	jimc36@comcast.net
1/18-1/22	MULTI	Off-trail Snowshoe & Sledge Trip**	Delirium Wilderness Tract	Michael Neiger	mneiger@hotmail.com <a href="http://tinyurl.com/3bn6js">http://tinyurl.com/3bn6js</a>
1/25-1/27	WKND	Crawlathon	Carter Caves State Park, Kentucky	Leslie Cordova	lesliegene@aol.com
JANUARY CLASSES					
1/13	SUN	Beginning Cross Country Ski Class - Classic Morning Session	Roscomon, MI (Cross Country Ski Headquarters)	Larry Mergentime	larrymergentime@yahoo.com
1/13	SUN	Beginning Cross Country Ski Class - Skate Afternoon Session	Roscomon, MI (Cross Country Ski Headquarters)	Larry Mergentime	larrymergentime@yahoo.com
1/29	TUE	Know Your Knots Workshop	Southfield	Joan Rozelle	joanrozelle@yahoo.com
FEBRUARY ACTIVITIES					
2/5	TUE	GENERAL MEETING	Colony Hall	Lou Szakal	Everest2008@comcast.net
2/5	FRIDAY	PROGRAM: Massasauga Rattler - Yuman Lee, MSU Extension	Colony Hall	Allen Duncan	allenduncan@aggienetwork.com
2/9-2/17	MULTI	21st Annual Canadian Snowshoeing Expedition**	Lake Superior Provincial Park, Ontario	Michael Neiger	mneiger@hotmail.com <a href="http://therucksack.tripod.com">http://therucksack.tripod.com</a>
2/10-2/17	MULTI	Winter Sports/Carnival Getaway	Mont Ste. Anne Ski Resort, Quebec	Joanne Sarrasin	jsarrasin@yahoo.ca
2/14-2/29	MULTI	Costa Rica Adventure**	Costa Rica	Jim Gessner	Gessnerj@comcast.net
2/15-2/17	WKND	Dogsledding	South River, Ontario	Larry Mergentime	larrymergentime@yahoo.com
2/24	SUN	Detroit Climb 2	Renaissance Center, Detroit	Lisa Boose	Elbows6000@att.net
FEBRUARY CLASSES					
2/7, 2/14, 2/21, 2/24, 2/28, 3/6, 3/7-3/9	THR, MULTI	Winter Survival	TBA	Doug Lanyk	dslanyk@earthlink.net
MARCH ACTIVITIES					
3/4	TUE	GENERAL MEETING	Colony Hall	Lou Szakal	Everest2008@comcast.net
3/4	FRIDAY	PROGRAM: Jim Dufresne - Backpacking Michigan	Colony Hall	Allen Duncan	allenduncan@aggienetwork.com
3/7-3/11	MULTI	Winter Camping and Ice Exploration**	Pictured Rocks National Lakeshore	Michael Neiger	mneiger@hotmail.com <a href="http://therucksack.tripod.com">http://therucksack.tripod.com</a>
3/29-4/5	MULTI	GM Ski Club Trip**	Mammoth Mountain, California	Darrell Ahlberg	Dave Duvali daveduvali@wowway.com
UPCOMING ACTIVITIES					
4/4-4/7	WKND	Off-trail Backpacking**	Pigeon River Country State Forest	Michael Neiger	mneiger@hotmail.com <a href="http://therucksack.tripod.com">http://therucksack.tripod.com</a>
5/2-5/5	WKND	Off-trail Backpacking**	Eastern Upper Peninsula	Michael Neiger	mneiger@hotmail.com <a href="http://therucksack.tripod.com">http://therucksack.tripod.com</a>
5/10-5/17	MULTI	Backpacking Trip	Grand Canyon National Park	Grey Ivanov	sergey.ivanov@us.bosch.com
5/23-5/26	MULTI	Hiking and Biking	Cuyahoga Valley National Park, Ohio	Leslie Cordova	lesliegene@aol.com
5/24-6/1	MULTI	22nd Annual Canadian Backpacking Expedition**	Lake Superior Provincial Park	Michael Neiger	mneiger@hotmail.com <a href="http://therucksack.tripod.com">http://therucksack.tripod.com</a>

All classes and activities are limited to SOLAR members except for non-SOLAR events marked with \*\*. If you would like to help plan and/or lead a SOLAR activity, please contact Kevin Cotter at (248) 544-9637 or [activities@solaroutdoors.org](mailto:activities@solaroutdoors.org). If you would like to help plan and/or teach a SOLAR class, please contact Sarah Kirkish at [education@solaroutdoors.org](mailto:education@solaroutdoors.org). SOLAR has a no-refund policy. If you are unable to attend an activity you may "sell your spot" to another club member. \*\* Denotes non-SOLAR activity or non-SOLAR class (SOLAR will not be held responsible for these activities/classes).

## WHAT IS SOLAR?

SOLAR is a non-profit club with 400-plus members dedicated to the intelligent enjoyment of nature and outdoor pursuits.

## MEMBERSHIP

Membership is only \$40 a year per person (\$55 per family) and includes discounts to a number of retail outfitters, access to club-owned equipment, a monthly newsletter, and a chance to meet hundreds of other like-minded adventurers drawn together by a common love of pristine lakes, breathtaking vistas, virgin forests, scenic shorelines, and the experiences to be found there.

## MEETINGS

Our monthly meetings are held the first Tuesday of every month in Southfield at the Colony Hall, 21780 Evergreen (between 8 & 9 Mile Roads) at 7:30 pm. Everyone is welcome to attend.

## SOLAR RAY NEWSLETTER

The SOLAR RAY is a monthly publication of SOLAR and is available online at [www.solaroutdoors.org](http://www.solaroutdoors.org). To receive a copy in the mail, please contact Mary Price at [membership@solaroutdoors.org](mailto:membership@solaroutdoors.org).

## SUBMISSION GUIDELINES

Submissions for the SOLAR Ray are due on the Friday two weeks prior to the monthly Steering Committee Meeting (January 18 for the January issue). Electronic documents only, Word is preferred and please attach your images. If you have any questions, please contact Rebecca Sweeton at [rayeditor@solaroutdoors.org](mailto:rayeditor@solaroutdoors.org).

## STEERING COMMITTEE

President: Lou Szakal	Vice President: Cindy Taylor
Secretary: Michelle Delaporte	Treasurer: Carol McCrie
Activities: Kevin Cotter	By-Laws: Chuck Smith
Education: Sarah Kirkish	Equipment: Rob Schwenke
Historian: Pam Schmelzer	Membership: Mary Price
Programs: Allen Duncan	Public Relations: Heather Hall
Ray Editor: Rebecca Sweeton	Webmaster: Dave Sweeton

## PRESIDENTS AT LARGE

Mike Banks | Leslie Cordova | Moe DeFrance | Al Fylak  
Steve Gardner | Bill Halvingis | Cindy Harrison-Felix | Tom Hayes  
Doug Lanyk | Larry Martin | Joan Hettinger | Tom Oloffo  
Joan & Bob Westbrook

## STEERING COMMITTEE MEETINGS

The Steering Committee meets on the last Tuesday of every month at 7:30 pm. These meetings are usually open to the general membership. Anyone who is interested in learning what topics are discussed, the decisions being made or contemplating running for a position on the Steering Committee, is welcome to attend. If you are interested in attending the Steering Committee Meeting, please contact Lou Szakal at [president@solaroutdoors.org](mailto:president@solaroutdoors.org).

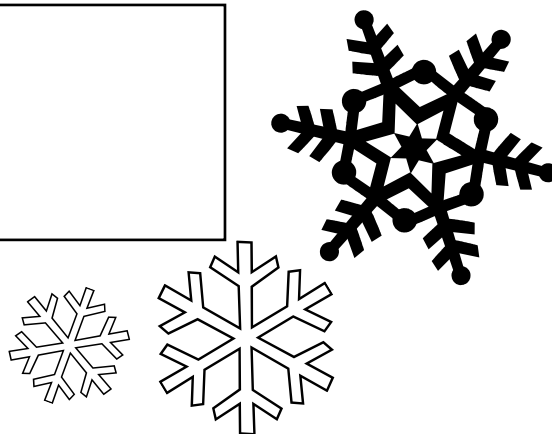
## FOR MORE INFORMATION

Visit our website at: [www.solaroutdoors.org](http://www.solaroutdoors.org).

## SPECIAL THANKS TO THE SOLAR RAY ASSISTANT EDITORS

Winnie Chrzanowski, Kathy Drewyore, Sheila Hardy, Pam Schmelzer, Carol McCrie, Elizabeth Schwab, and Ati Tislerics

Visit our website: [www.solaroutdoors.org](http://www.solaroutdoors.org)



**SOLAR**  
33228 W. 12 Mile Road  
P.O. Box 220  
Farmington Hills, MI 48334